

# CYLINDER JOINTS



- Aligning the axial center and correcting the parallelism can be performed easily.
- High machining accuracy for aligning the axial center is not required.
- Time taken for installation can be greatly reduced.
- The overall shape is simple and small, allowing simple handling.
- A dust seal is provided preventing any breakdown due to foreign objects or dust.

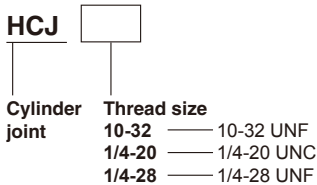
## Specifications

Model	Applicable cylinder rod thread size	Applicable cylinder and bore size							Maximum thrust of applicable cylinder at 1MPa[145psi.] N [lbf.]	Maximum tensile strength load N [lbf.]	Allowable eccentricity U mm[in.]	Swivel angle
		Pen	Multi	Jig C (male thread specification :- B)	Slim	Twinport	DYNA					
HCJ10-32	10-32 UNF	—	16	—	—	16	—	137.3 [30.9]	5884 [1323]	0.5[0.020]	±5°	
HCJ1/4-20	1/4-20 UNC	—	—	—	—	—	—	137.3 [30.9]	5884 [1323]	0.5[0.020]		
HCJ1/4-28	1/4-28 UNC	—	—	—	—	—	—	137.3 [30.9]	5884 [1323]	0.5[0.020]		
HCJ□5/16-18	5/16-18 UNC	—	—	—	20	20	—	305 [68.6] (475.6 [106.9])※	20594 [4631]	0.5[0.020]		
HCJ□5/16-24	5/16-24 UNF	—	—	—	—	—	—	305 [68.6] (475.6 [106.9])※	20594 [4631]	0.5[0.020]		
HCJ□3/8-16	3/8-16 UNC	—	—	—	25, 32	25, 32	—	780.6 [175.5]	31381.3 [11025]	0.75[0.0295]		
HCJ□7/16-20	7/16-20 UNF	—	—	—	—	—	—	686.5 [154.3]	449033.3 [11025]	1[0.039]		
HCJ□1/2-13	1/2-13 UNC	—	—	—	40, 50, 63	40	—	3026.3 [680.3]	449033.3 [11025]	1[0.039]		
HCJ□1/2-20	1/2-20 UNF	—	—	—	—	—	—	3026.3 [680.3]	449033.3 [11025]	1[0.039]		
HCJ□3/4-10	3/4-10 UNC	—	—	—	—	—	—	1906.4 [428.6]	62762.6 [14112]	1.25[0.0492]		
								3026.3 [680.3]				

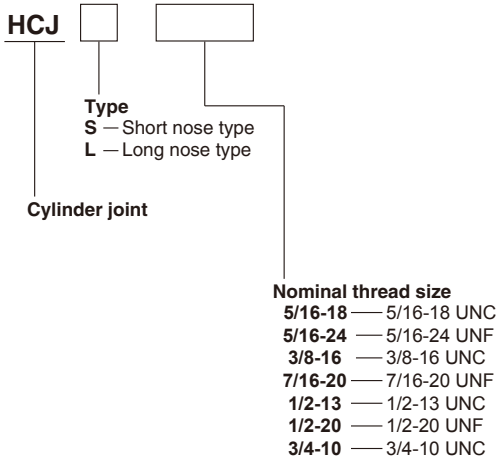
※: For square rod cylinders.

## Order Codes

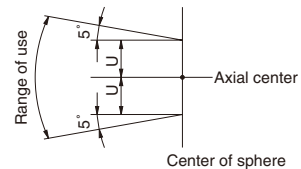
- For HCJ10-32, HCJ1/4-20, HCJ1/4-28



- For HCJ□5/16-18~HCJ□3/4-10

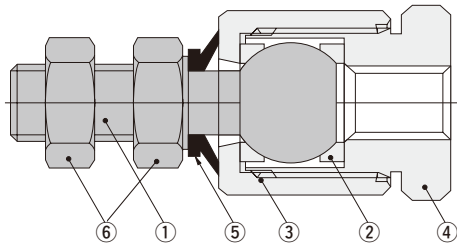


## Allowable Eccentricity and Swivel Angle



# Inner Construction, Major Parts and Materials

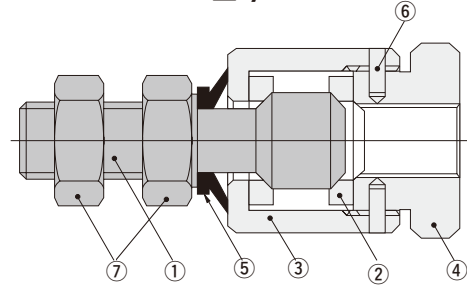
## ● HCJ10-32, HCJ1/4-20, HCJ1/4-28



No.	Parts	Materials	Remarks
①	Stud	Steel	Nickel plated
②	Ring	Steel	—
③	Case	Brass	Nickel plated
④	Socket	Brass	
⑤	Dust seal	Synthetic rubber	NBR
⑥	Nut*	Mild steel	Zinc plated

Note \*: 1pc is attached

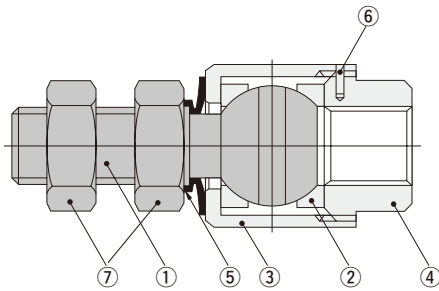
## ● HCJ□5/16-18 ~HCJ□1/2-20



No.	Parts	Materials	Remarks
①	Stud	Steel	Nickel plated
②	Ring	Special steel	—
③	Case	Steel (Brass)	Nickel plated
④	Socket	Steel (Brass)	
⑤	Dust seal	Synthetic rubber	NBR
⑥	Pin	Special steel	—
⑦	Nut*	Mild steel	Zinc plated

Note \*: 1pc is attached

## ● HCJ□3/4-10



No.	Parts	Materials	Remarks
①	Stud	Steel	Nickel plated
②	Ring	Special steel	—
③	Case	Steel	Nickel plated
④	Socket	Steel	Nickel plated
⑤	Dust seal	Synthetic rubber	NBR
⑥	Pin	Special steel	—
⑦	Nut*	Mild steel	Zinc plated

Note \*: 1pc is attached

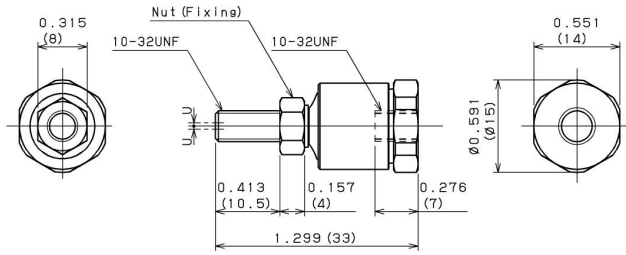
## Mass

Item	Size	kg [oz.]			
		3×0.5	4×0.7	5×0.8	6×1
Cylinder joint alone		0.011 [0.39]	0.012 [0.42]	0.023 [0.81]	0.025 [0.88]

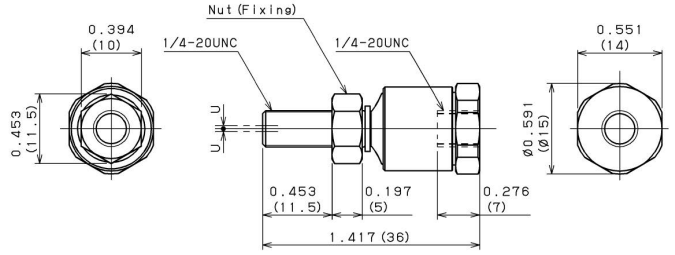
Item	Size	Short nose type (CJS)								Long nose type (CJL)							
		8×1	10×1.25	12×1.25	14×1.5	18×1.5	22×1.5	26×1.5	8×1	10×1.25	12×1.25	14×1.5	18×1.5	22×1.5	26×1.5		
		Cylinder joint alone	0.05 [0.11]	0.10 [0.22]	0.20 [0.44]	0.21 [0.46]	0.36 [0.79]	0.67 [1.48]	1.27 [2.80]	0.055 [0.121]	0.105 [0.232]	0.213 [0.470]	0.24 [0.53]	0.41 [0.90]	0.75 [1.65]	1.18 [2.60]	
With foot mounting bracket	—	—	—	—	—	—	—	0.09 [0.20]	0.17 [0.37]	0.36 [0.79]	0.39 [0.86]	1.00 [2.21]	1.69 [3.73]	2.32 [5.12]			
With flange mounting bracket	0.10 [0.22]	0.21 [0.46]	0.26 [0.57]	0.47 [1.04]	0.95 [2.09]	1.93 [4.26]	2.52 [5.56]	0.090 [0.198]	0.165 [0.364]	0.272 [0.600]	0.49 [1.08]	0.95 [2.09]	1.96 [4.32]	2.57 [5.67]			

# Dimensions (mm)

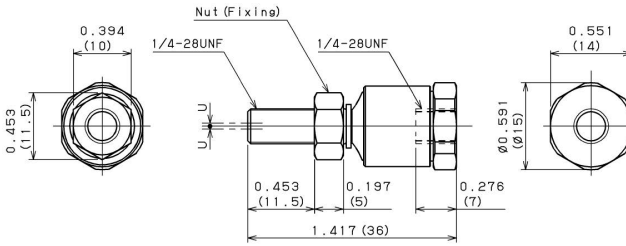
## ● HCJ10-32



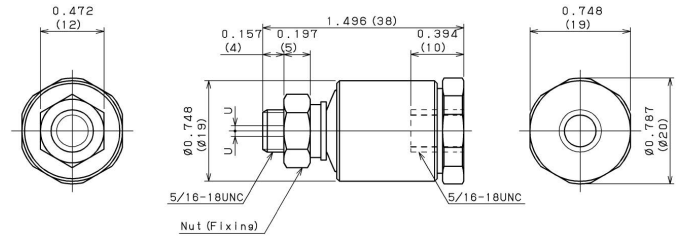
## ● HCJ1/4-20



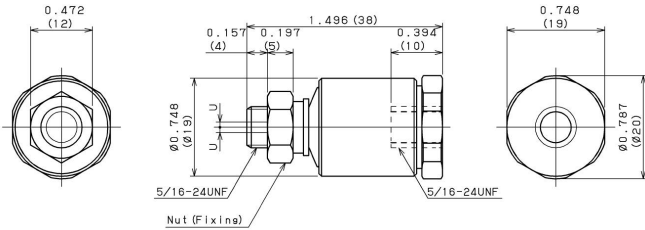
## ● HCJ1/4-28



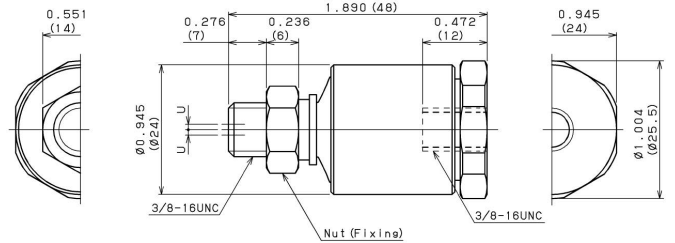
## ● HCJS5/16-18



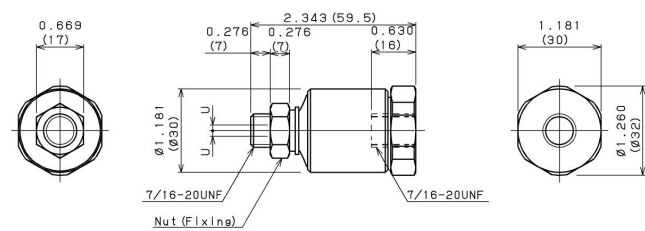
## ● HCJS5/16-24



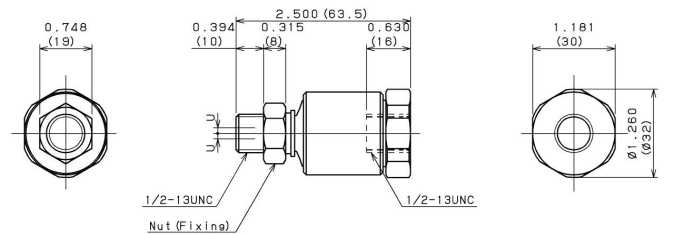
## ● HCJS3/8-16



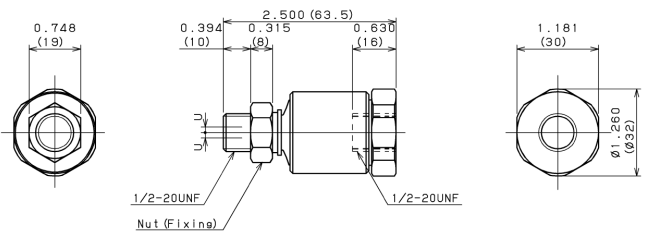
## ● HCJS7/16-20



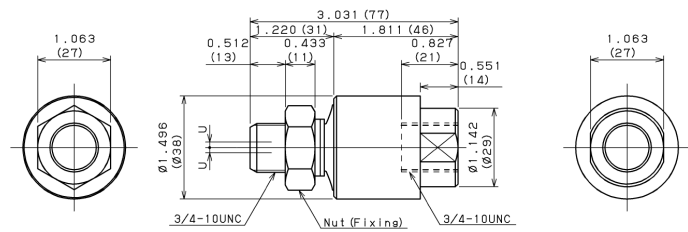
## ● HCJS1/2-13



## ● HCJS1/2-20

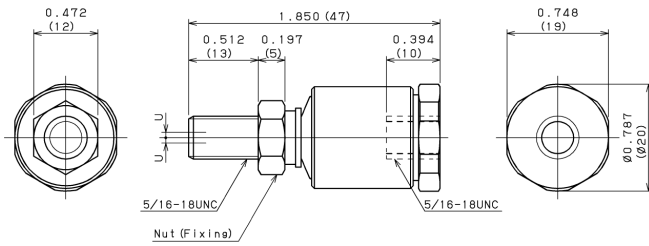


## ● HCJS3/4-10

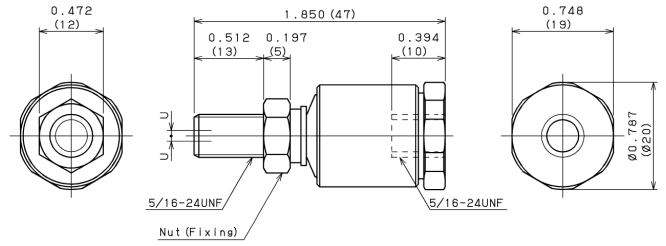


## Dimensions (mm)

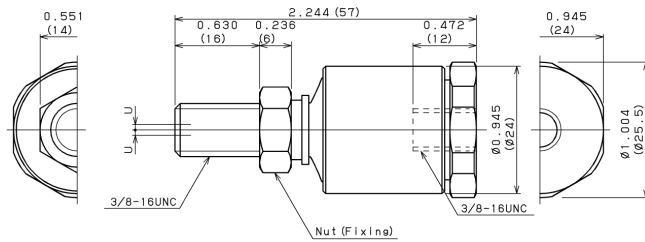
### ● HCJL5/16-18



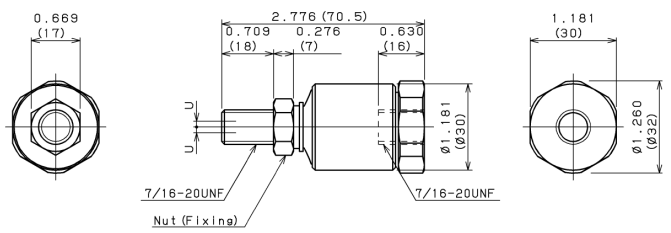
### ● HCJL5/16-24



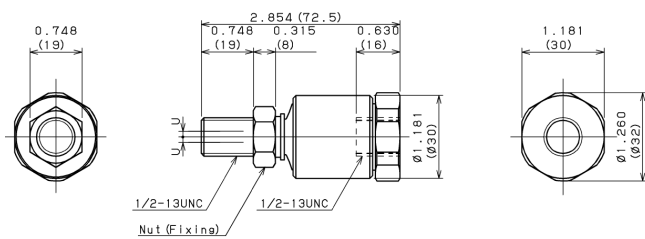
### ● HCJL3/8-16



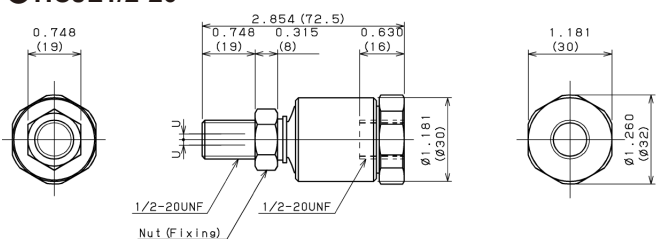
### ● HCJL7/16-20



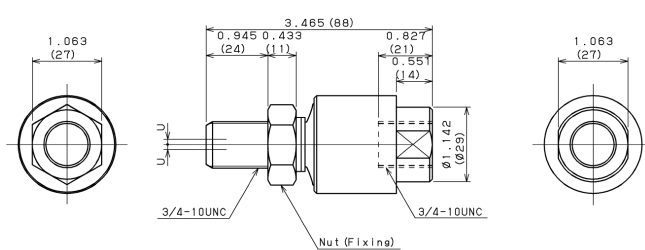
### ● HCJL1/2-13



### ● HCJL1/2-20



### ● HCJL3/4-10



## Handling Instructions and Precautions

- The cylinder joint is for air cylinders. Consult us for any use other than for the air cylinder.
- The cylinder joint stud can rotate, but primarily the cylinder joint is not designed as a rotary joint, so it should not be used as a rotary joint.
- It cannot be used again after disassembled.
- The lubricant has been filled in the body.
- The threaded depth in the cylinder rod socket should be within the value shown in the catalog. As a guide, it should be in a position about 1 or 2 rotations back from where it reaches the bottom.
- Be sure not to let any foreign objects or dust enter inside through the socket female thread before installation.