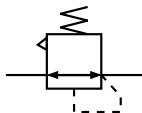




Symbol

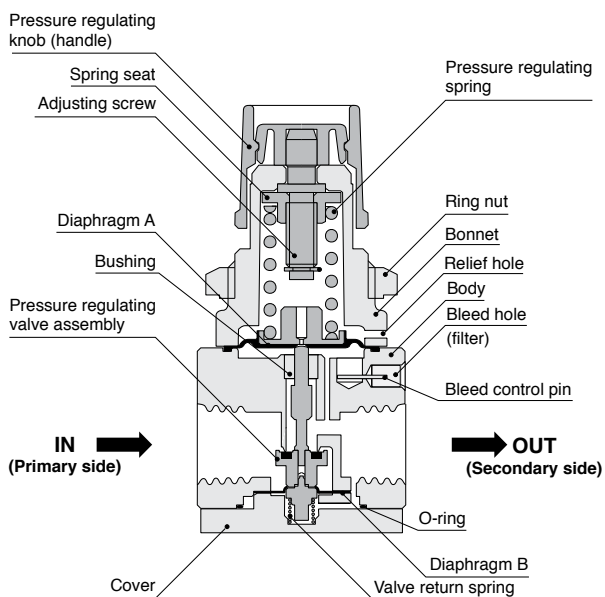


Specifications

Item	Model	PRS100
Media		Air, N ₂ , CO ₂ , He, Ar
Operation method		Diaphragm type
Port size		M5 × 0.8, Rc1/8, Rc1/4
Sensitivity	MPa [psi.]	0.001 [0.15]
Pressure setting range	MPa [psi.]	0.01 ~ 0.25 [1.5 ~ 36]
Maximum operating pressure	MPa [psi.]	0.9 [131]
Proof pressure	MP [psi.]	1.5 [218]
Operating temperature range	°C [°F]	5 ~ 60 [41 ~ 140]
Air consumption ^{Note}	L/min [ft. ³ /min.] (ANR)	Max. 2 [0.07]
Mass	kg [lb.]	0.231 [0.509] (including body, plug, and hexagon nut)
Optional	Pressure gauge	G3: Low pressure specification (0.3MPa [44psi.])
	Bracket	L-type mounting bracket (Mass 0.025kg [0.055lb.])

Note: Value when secondary air pressure is set to 0.25MPa [36psi.].

Inner Construction and Major Parts



Major Parts and Materials

Parts	Materials
Body	SUS316
Pressure regulating knob (handle)	Plastic (ABS)
Bonnet	Plastic (PBT)
Diaphragm A, B	Fuoro rubber (FKM)
Pressure regulating spring	Piano wire (color chromated)
O-ring	Fuoro rubber (FKM)
Pressure regulating valve assembly	SUS316 and fuoro rubber (FKM)
Cover	SUS316
Bushing	Fuoro resin (PTFE)
Valve return spring	SUS316
Bleed control pin	SUS316
Filter	Plastic (PVA)
Adjusting screw	Brass (nickel plated)
Spring seat	Brass (nickel plated)
Ring nut	Steel (nickel plated)
Plug (supplied)	SUS316
Bracket (optional)	SPCC (nickel plated)

Order Codes

PRS100 - [] - [] - []

Port size
M5 : M5 × 0.8
01 : Rc1/8
02 : Rc1/4

Bracket^{Note}
Blank : Without bracket
B : With bracket

Pressure gauge
Blank : Without pressure gauge
G3 : Low pressure specification (0.3MPa [44psi.])

Precision stainless regulator

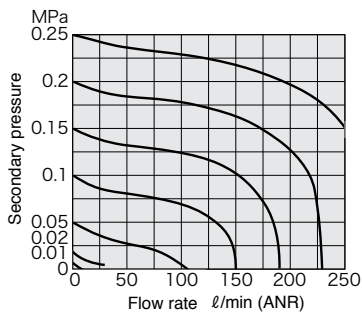
● Note: Order code for bracket only

8 - 10 - N

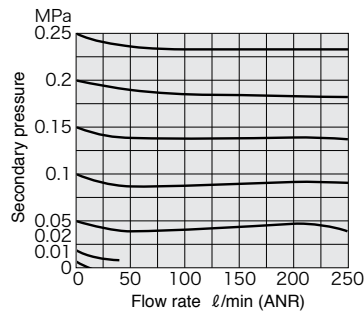
Remark: Shipped in double packaging.

Flow Rate Characteristics

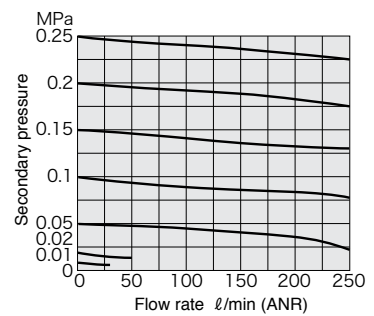
● PRS100-M5



● PRS100-01



● PRS100-02



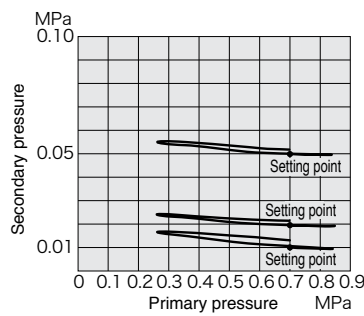
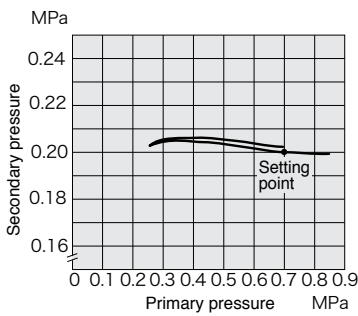
1MPa = 145psi., 1L/min = 0.0353ft.³/min.

Remark: The graphs show flow rate characteristics when the primary pressure is fixed at 0.7MPa [102psi.].

Pressure Characteristics

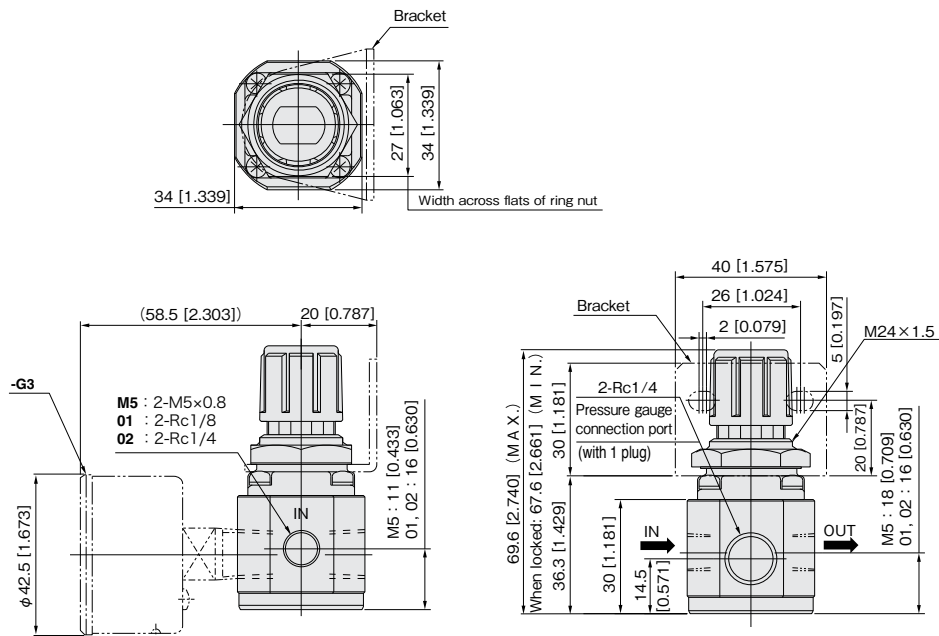
● PRS100-□

(Low pressure range)



1MPa = 145psi.

Dimensions mm [in.]



Remark: The mounting hole diameter for mounting the precision stainless regulator on a panel, etc. should be $\phi 24.5$ [0.965].