

Miniature precision regulator

RP1 series

Low-profile precision air regulator with the same capability with "RP1 series" in fractional pressure and fluid rate at 5L/min(0.18scfm) or under. Best suitable for saving space.



RG1 series

Compact and light precision air regulator with excellent characteristic specially in setting up a fractional pressure at or under flow rate of 3L/min(0.11scfm).



RG2 series

Regulator specialized for small size and light weight(33g[0.07]).





THIN-TYPE PRECISION AIR REGULATORS

RP1 · NR-50-1

Features

● **The thinnest in this class**

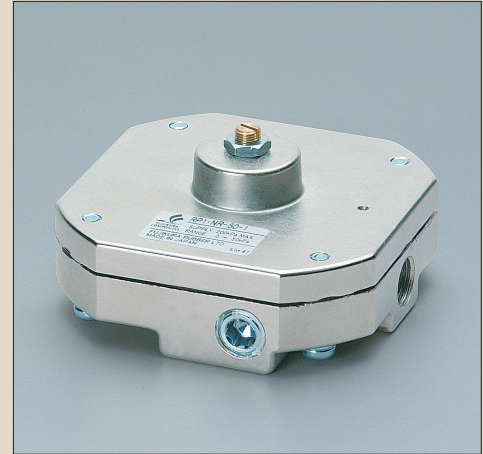
The height to the bonnet is 30mm and the thickness is about one third that of the precision pressure reducing valve RP series. The product is best suited for space-saving installation and compact design.

● **Superior pressure characteristic**

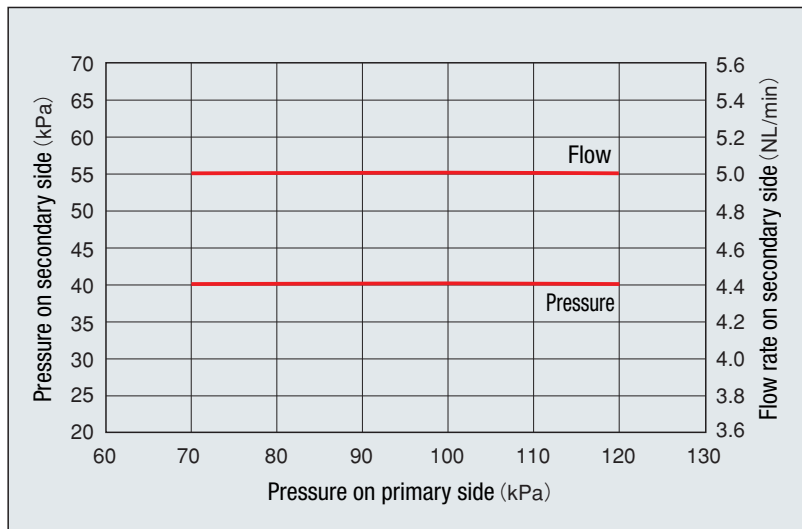
At a small flow rate, it demonstrates performance equivalent to that of the precision pressure reducing valve RP series.

● **Accurate control**

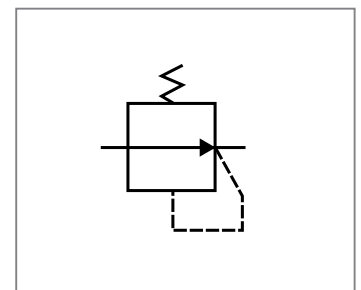
It is superior in pressure reproducibility while featuring direct-acting response.



Pressure characteristic



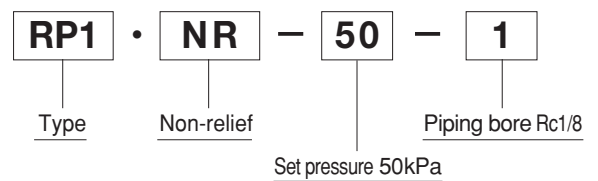
< JIS symbol >



Specifications

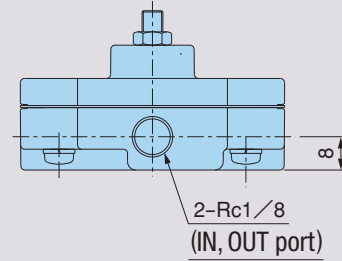
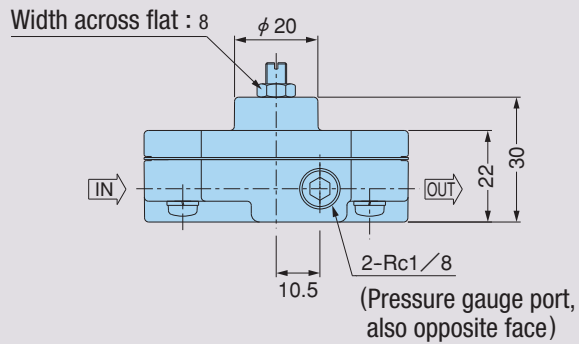
Fluid		Air
Pressure setting range	kPa	max. 50
Pressure range on primary side	kPa	max. 200
Operating temperature	°C	5 ~ 50
Piping connection bore		Rc1/8
Pressure gauge connection bore		Rc1/8
Filter		Available (end connection on IN side)
Weight	g	Approx. 170g

Model Designation

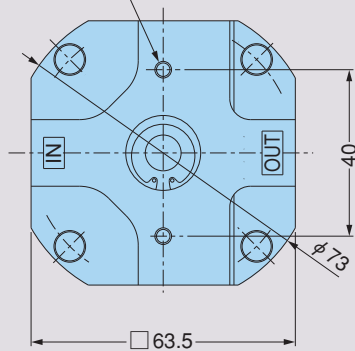


※ Only one type for RP1.

RP1·NR-50-1 General guide (unit : mm)



Fitting hole 2-M4 depth 8



Cautions

- ① Use clean compressed air as a fluid (impurities: not more than $5 \mu\text{m}$) in the specified pressure range.
- ② If foreign matter is mixed in the piping, malfunction may be caused.
- ③ When joints are screwed in the regulator, be careful so that the seal tape will not enter.
- ④ When the joint is connected to the regulator, do not tight the joint too firmly, otherwise the body may be damaged.
- ⑤ If the connections on IN and OUT sides are reversed, the regulator and other apparatuses may be damaged.
- ⑥ If the valve is installed on the primary side of the regulator, the pressure on the secondary side may become unstable.

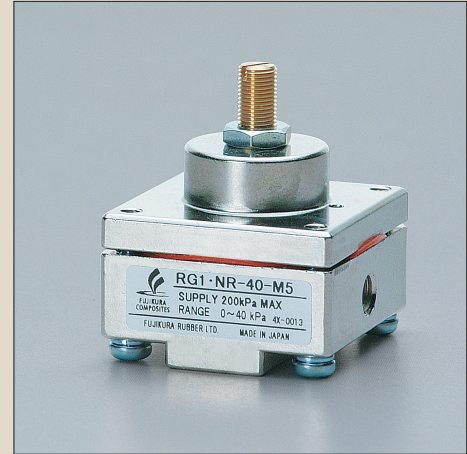


MINIATURE PRECISION AIR REGULATORS

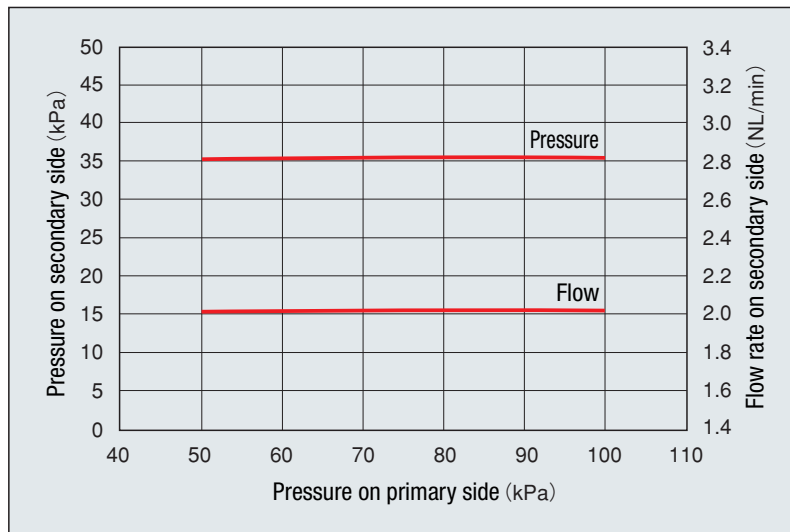
RG1 · NR-40-M5

Features

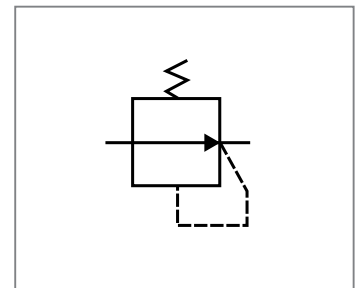
- The smallest and most lightweight in this class**
 Width is 30mm and height to the bonnet is 26mm. The product is very small and very light in weight at about 50g, and is best suited for space-saving installation and compact design.
- Superior pressure characteristic**
 At low flow rate of 3NL/min or less, it demonstrates the performance of the precision pressure reducing valve class.
- Accurate control**
 It is superior in pressure reproducibility while featuring direct-acting response.



Pressure characteristic



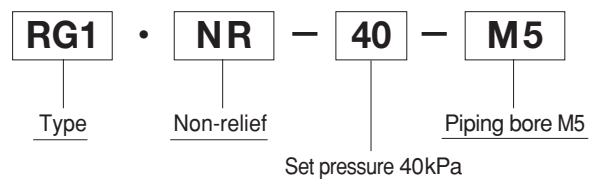
< JIS symbol >



Specifications

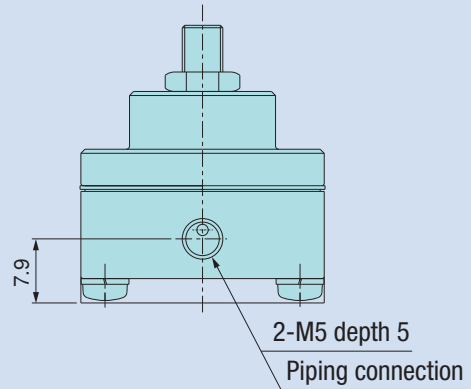
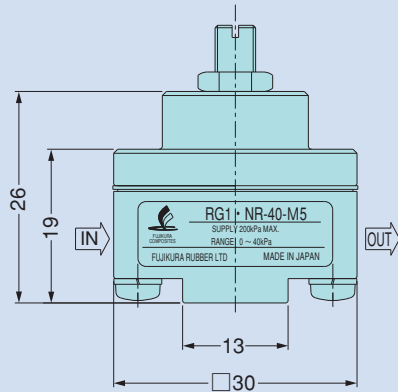
Fluid	Air	
Pressure setting range	kPa	max. 40
Pressure range on primary side	kPa	max. 200
Operating temperature	°C	5 ~ 50
Piping connection bore	M5	
Filter	Available (end connection on IN side)	
Weight	g	Approx. 50

Model Designation

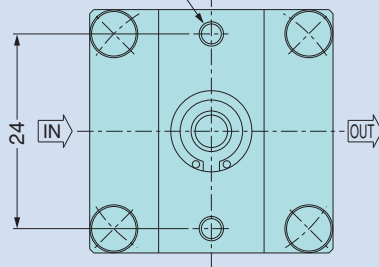


※ Only one type for RG1.

RG1·NR-40-M5 General guide (unit : mm)



Fitting tap 2-M3 depth 7



Cautions

- ① Use clean compressed air as a fluid (impurities: not more than $5\ \mu\text{m}$) in the specified pressure range.
- ② If foreign matter is mixed in the piping, malfunction may be caused.
- ③ When joints are screwed in the regulator, be careful so that the seal tape will not enter.
- ④ When the joint is connected to the regulator, do not tight the joint too firmly, otherwise the body may be damaged.
- ⑤ If the connections on IN and OUT sides are reversed, the regulator and other apparatuses may be damaged.
- ⑥ If the valve is installed on the primary side of the regulator, the pressure on the secondary side may become unstable.



“RG2” series

Regulator specialized for small size and light weight(33g[0.07pound]).

■ Features

- The most compact construction and weight about 33g allows the best installation in saved space and compact design without care about its weight.
- Excellent performance as air precision regulators at a small flow rate of 5L/min(ANR) or less.
- Extremely little leakage.



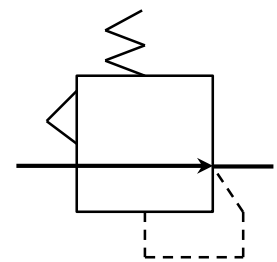
■ Applications

- Ideal for applications that are compact and require pressure characteristics.

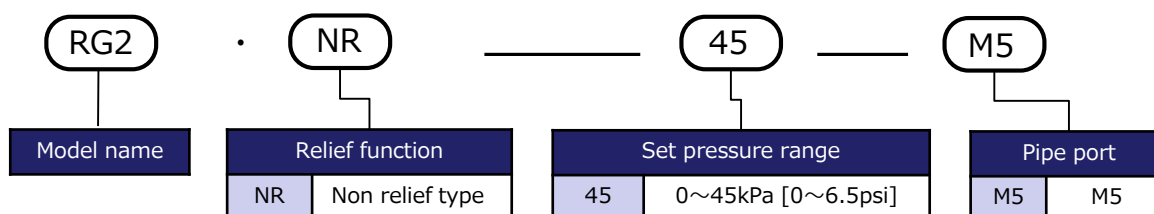
■ Specification

Model name	RG2 · NR-45-M5	
Working fluid	Clean compressed air	
Set pressure range	kPa[psi]	45 MAX [6.5]
Supply pressure range	kPa [psi]	200 MAX [29]
Operating temperature	°C[°F]	5 ~ 50 [41 ~ 122]
Pipe port	Rc	M5×0.8 [0.03]
Weight	kg[pound]	0.033 [0.07]

■ JIS code



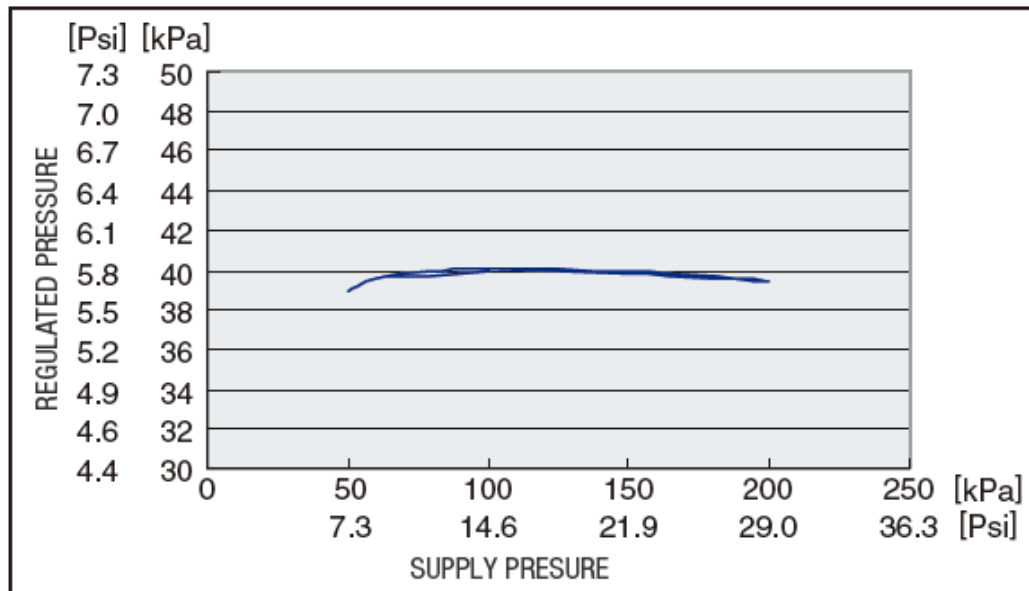
■ Model designation





FUJIKURA COMPOSITES

■ Characteristic



■ Size

