

# Clean room compatible precision regulator

## RS-KA series

RS-KA series are pressure regulators for clean room, and servo-balanced system comprising rolling diaphragm and measuring capsule provides exceptionally precise pressure control.



## RR-KA series

RR-KA series are air relay regulators for clean room, and servo-balanced system comprising rolling diaphragm and measuring capsule provides exceptionally precise pressure control.





# FUJIKURA COMPOSITES

## “RS-KA” series

## Clean room

Pressure regulators for clean room, and servo-balanced system comprising rolling diaphragm and measuring capsule provides .

### ■ Features

- The parts are made of stainless materials and fluoric rubber, and the other parts are all electroless nickel plated so that very little dust is caused.
- Manifold pipe fitting is available.
- Exhaust relief air and bleed air out of clean room is available to exhaust by connecting exhaust pipe to relief port and bleed port.
- Highly accurate pressure control with sensitivity 0.1%F.S. repeatability  $\pm 0.1\%$ F.S.



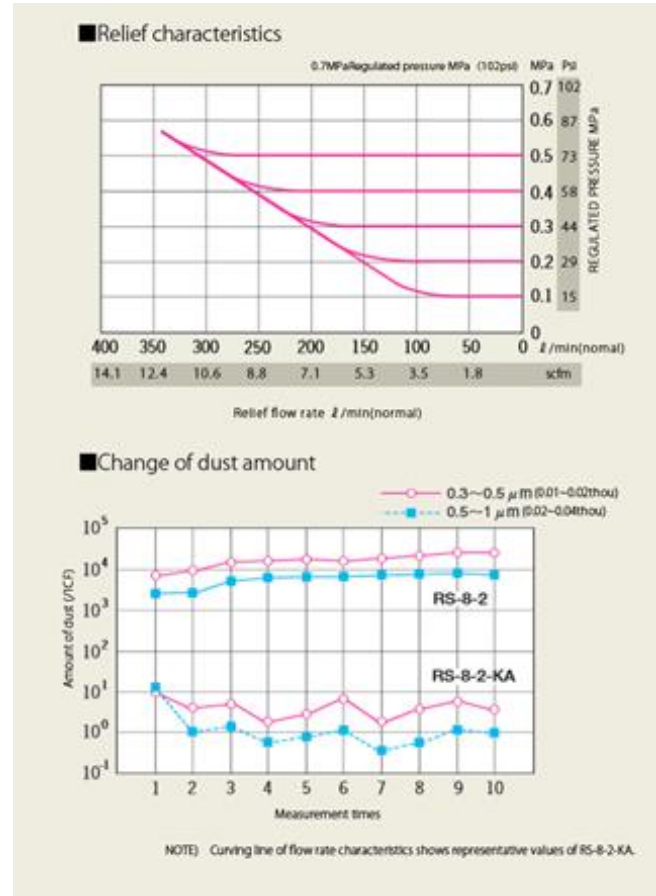
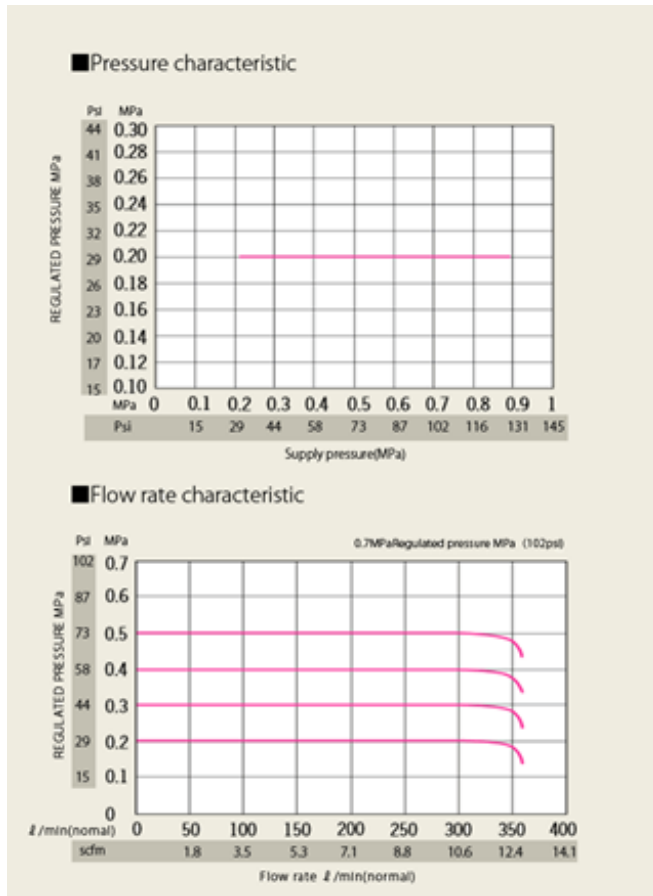
### ■ Specification

Model name		RS-4-□-KA	RS-8-□-KA
Working fluid		Clean compressed air	
Set pressure range	MPa[psi]	0.014 ~ 0.42 [2.0 ~ 61]	0.014 ~ 0.84 [2.0 ~ 122]
Supply pressure range	MPa[psi]	1 [145] Max	
Relief function		Incorporated	
Repeatability	% F.S.	Less than $\pm 0.1$	
Sensitivity	% F.S.	Within 0.1	
Air consumption	ℓ /min(ANR) [scfm]	Within 3.7 [0.13]	
Operating temperature	°C[°F]	5 ~ 60 [41 ~ 140]	
Pipe port	Rc	1/4, Manifold	
Gauge port	Rc	1/4	
Bracket		Standard equipment (excluding manifold)	
Weight	kg[pound]	0.41 [0.9]	

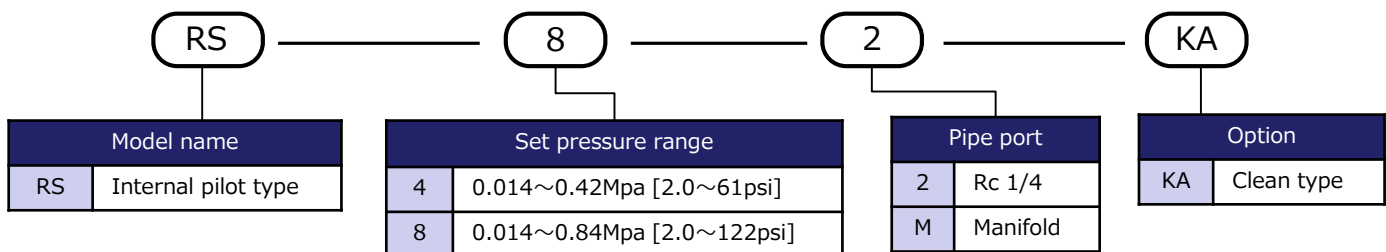


# FUJIKURA COMPOSITES

## Characteristic



## Model designation



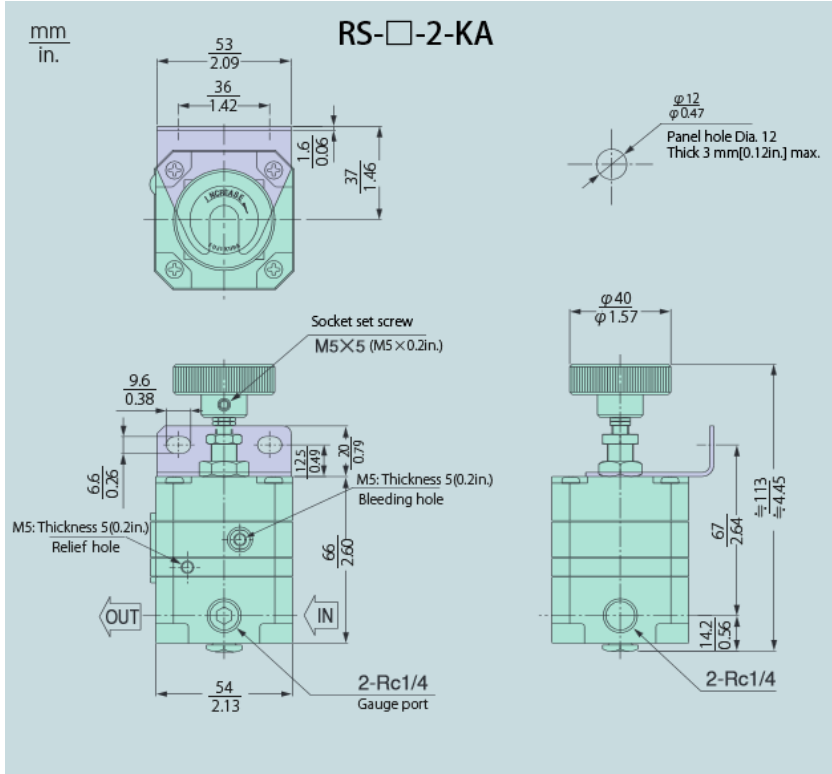
## Applications

"RS-KA series" is ideal for precision pressure control in clean room.

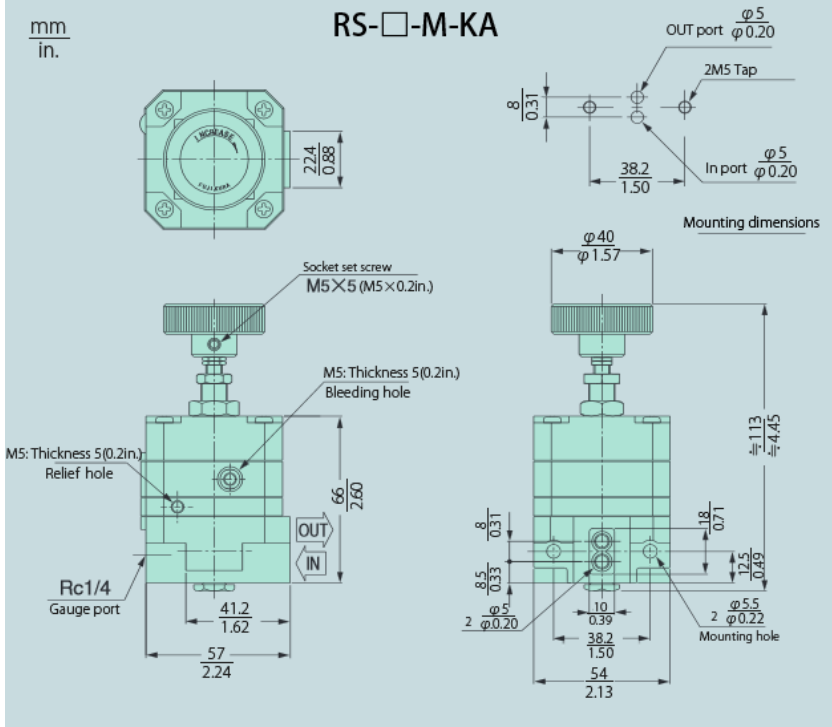
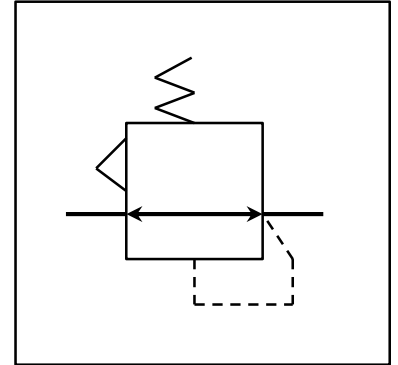


# FUJIKURA COMPOSITES

## ■ Size



## ■ JIS code





# FUJIKURA COMPOSITES

## “RR-KA” series

## Clean room

Air relay regulators for clean room, and servo-balanced system comprising rolling diaphragm and measuring capsule provides exceptionally precise pressure control.

### ■ Features

- The parts are made of stainless materials and fluoric rubber, and the other parts are all electroless nickel plated so that very little dust is caused.
- Manifold pipe fitting is available.
- Exhaust relief air and bleed air out of clean room is available to exhaust by connecting exhaust pipe to relief port and bleed port.
- Highly accurate pressure control with sensitivity 0.1%F.S. repeatability  $\pm 0.1\%$ F.S.



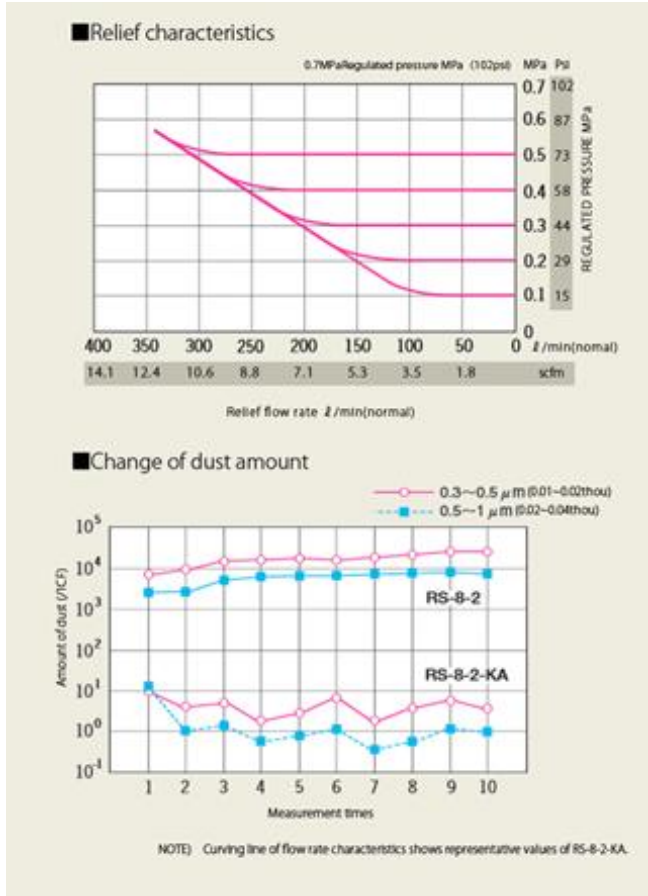
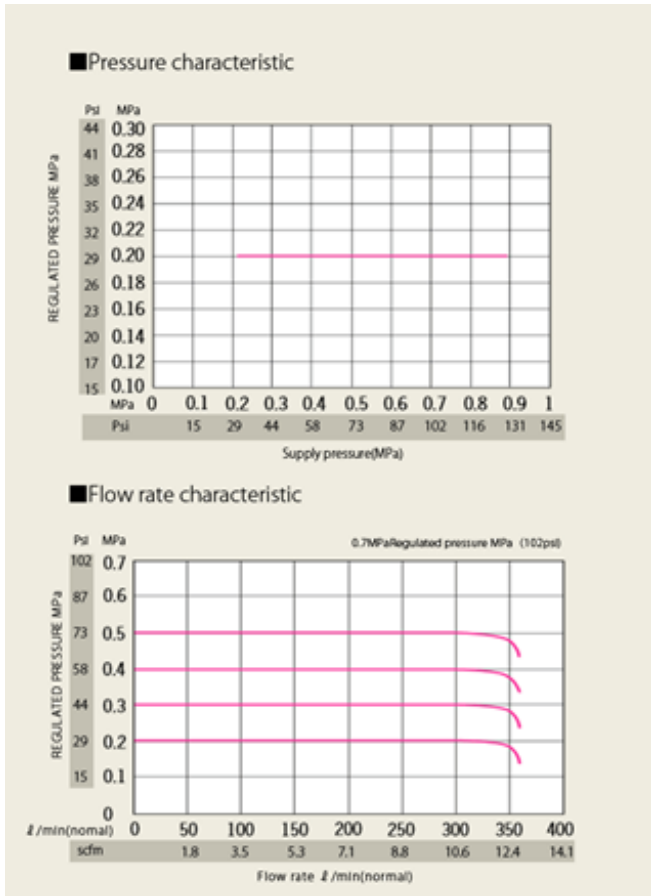
### ■ Specification

Model name		RR-8-□-KA
Working fluid		Clean compressed air
Set pressure range	MPa[psi]	0.014 ~ 0.84 [2.0 ~ 122]
Supply pressure range	MPa[psi]	1 [145] Max
Relief function		Incorporated
Repeatability	% F.S.	Less than $\pm 0.1$
Sensitivity	% F.S.	Within 0.1
Air consumption	$\ell$ /min(ANR) [scfm]	Within 3.7 [0.13]
Operating temperature	$^{\circ}$ C[ $^{\circ}$ F]	5 ~ 60 [41 ~ 140]
Pipe port	Rc	$\frac{1}{4}$ , Manifold
Gauge port	Rc	$\frac{1}{4}$
Bracket		Standard equipment (excluding manifold)
Weight	kg[pound]	0.75 [1.65]

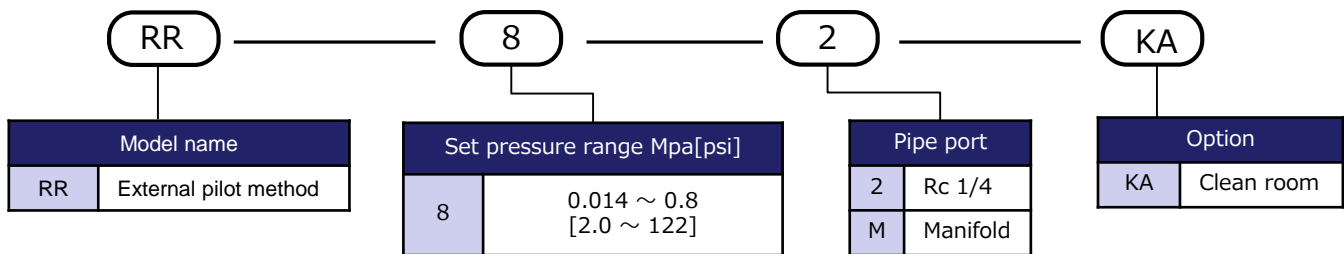


# FUJIKURA COMPOSITES

## ■ Characteristic



## ■ Model designation



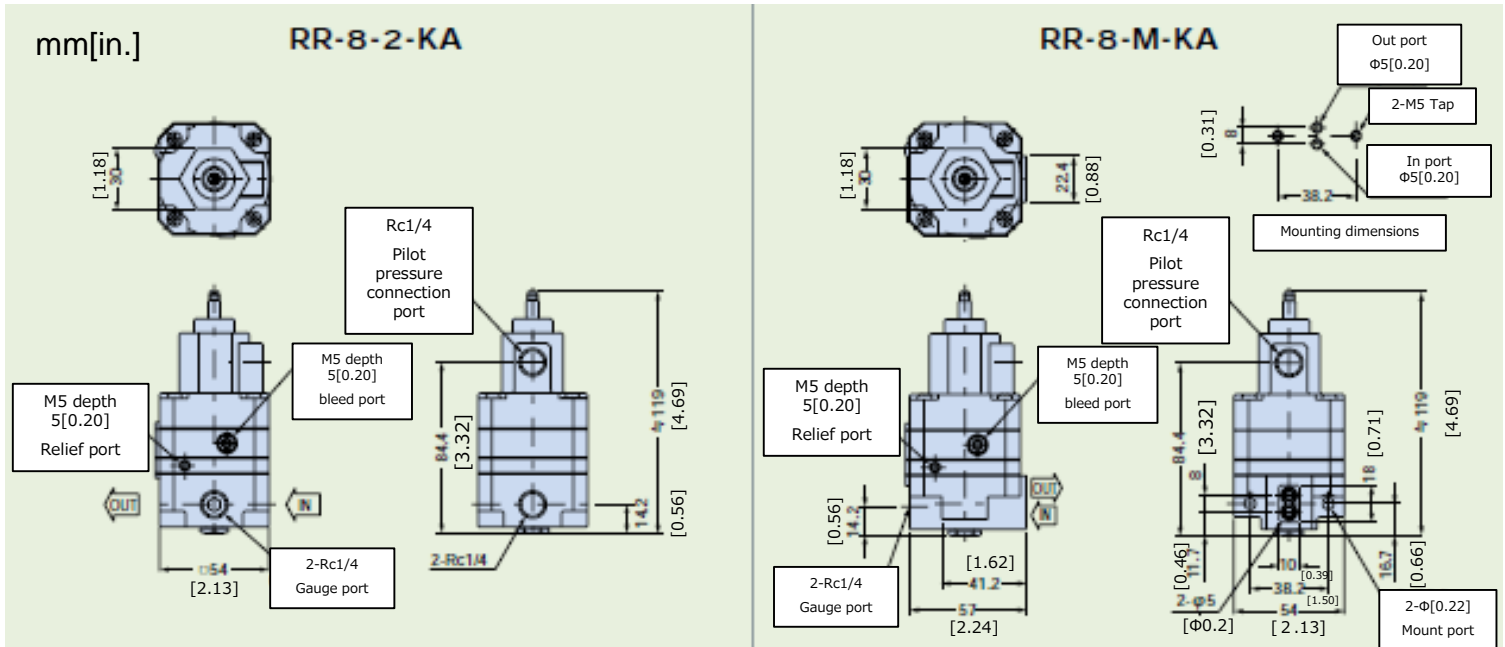
## ■ Applications

- "RR-KA series" is ideal for precision pressure control in clean room.



# FUJIKURA COMPOSITES

## ■ Size



## ■ JIS code

