

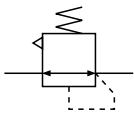
# KOGANEI CLEAN SYSTEM STAINLESS REGULATORS

## RS100, RS110

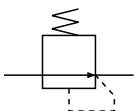


### Symbols

#### ● Relief



#### ● Non-relief

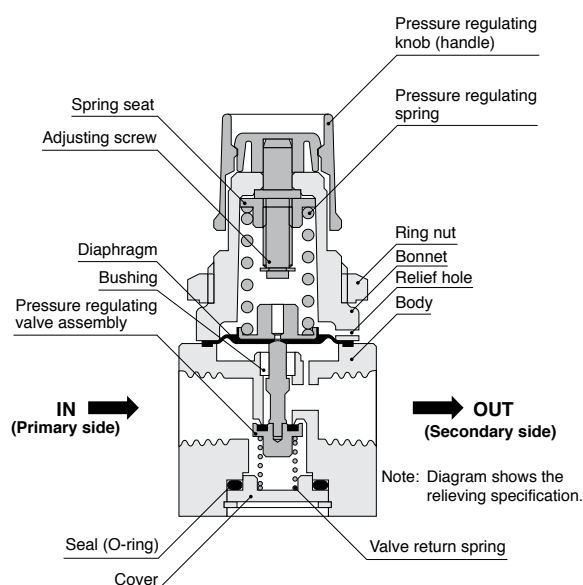


### Specifications

Item	Model	RS10 □		RS11 □	
		RS100	RS101	RS110	RS111
Media		Air, N <sub>2</sub> , CO <sub>2</sub> , He, Ar		Air, N <sub>2</sub> , O <sub>2</sub> , CO <sub>2</sub> , He, Ar	
Operation type		Diaphragm type			
Port size		M5 × 0.8, Rc1/8, Rc1/4			
Pressure setting range	MPa [psi.]	0.05 ~ 0.7 [7 ~ 102]	0.05 ~ 0.25 [7 ~ 36]	0.05 ~ 0.7 [7 ~ 102]	0.05 ~ 0.25 [7 ~ 36]
Maximum operating pressure	MPa [psi.]	0.9 [131]			
Proof pressure	MPa [psi.]	1.5 [218]			
Operating temperature range	°C [°F]	5 ~ 60 [41 ~ 140]			
Mass	kg [lb.]	0.228 [0.503] (Including body, plug and hexagon nut)			
Optional	Material of valve and diaphragm that contact gas	Fluoro rubber only (FKM)		Fluoro rubber (FKM), or fluoro plastic (PTFE)	
	Pressure gauge	G1: Standard specification (1MPa)	G3: Low-pressure specification (0.3MPa)	G1: Standard specification (1MPa)	G3: Low-pressure specification (0.3MPa)
	Mounting base	Base for mounting (mass: 0.035kg [1.23oz.])			

1MPa = 145psi.

### Inner Construction and Major Parts



### Major Parts and Materials

Parts	Materials
Body	SUS316
Pressure regulating knob (handle)	Plastic (ABS)
Bonnet	Plastic (PBT)
Diaphragm	Fluoro rubber (FKM), or fluoro rubber (FKM) with fluoro resin (PTFE) lining
Pressure regulating spring	Piano wire (color chromated)
Seal	Fluoro rubber (FKM)
Pressure regulating valve assembly	SUS316 + fluoro rubber (FKM), or SUS316 + fluoro rubber (FKM) with fluoro resin (PTFE) lining
Cover	SUS316
Bushing	Fluoro plastic (PTFE)
Valve return spring	SUS316
Adjusting screw	Brass (nickel plated)
Spring seat	Brass (nickel plated)
Plug (supplied)	SUS316
Ring nut	Mild steel (nickel plated)
Mounting base (optional)	SPCC (nickel plated)

### Order Codes

RS1 □ - □ - □ - □ - □

**Material of rubber parts that contact gas**  
 Blank : Fluoro rubber (FKM)  
 TF : Fluoro resin (PTFE) <sup>Note 1</sup>

**Pressure gauge** <sup>Note 2</sup>  
 Blank : Without pressure gauge  
 G1 : Standard specification (1MPa [145psi.])  
 G3 : Low pressure specification (0.3MPa [44psi.])

**Port size**  
 M5 : M5 × 08  
 01 : Rc1/8  
 02 : Rc1/4

**Relieving, non-relieving specifications**  
 0 : Relieving type  
 1 : Non-relieving type

**Pressure setting range**  
 0 : Standard specification  
 (0.05 ~ 0.7MPa [7 ~ 102psi.])  
 1 : Low pressure specification  
 (0.05 ~ 0.25MPa [7 ~ 36psi.])

**Mounting base**  
 Blank : Without mounting base  
 B : With mounting base

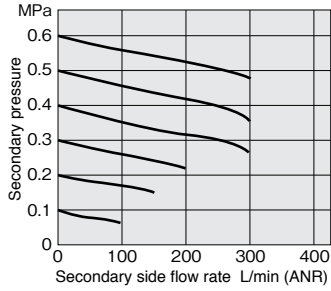
**Stainless regulator**

Notes: 1. -TF is available in non-relieving type only.

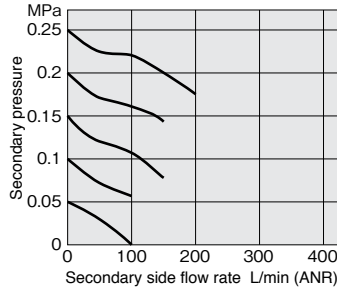
2. Select either the standard or low pressure type pressure gauge according to the regulator pressure setting range.

## Flow Rate Characteristics

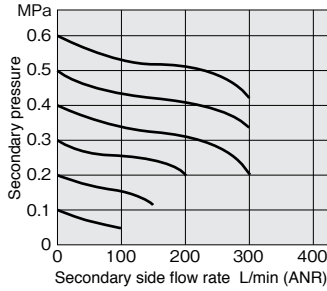
● RS100-M5



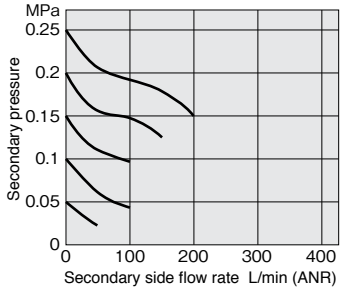
● RS101-M5



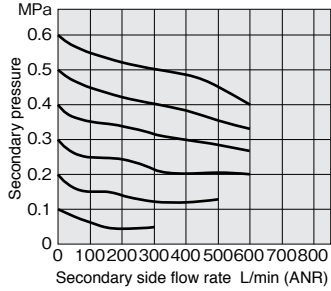
● RS110-M5-TF



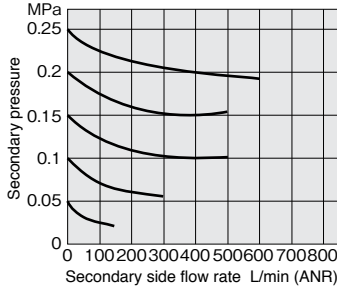
● RS111-M5-TF



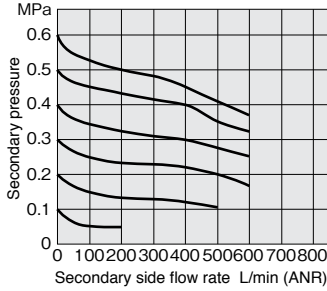
● RS100-01



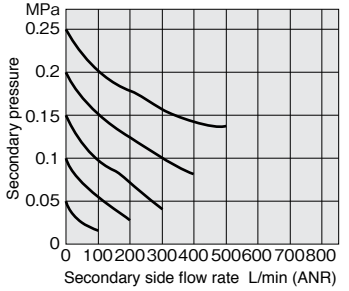
● RS101-01



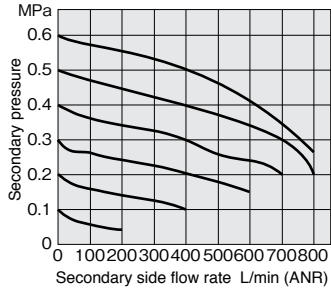
● RS110-01-TF



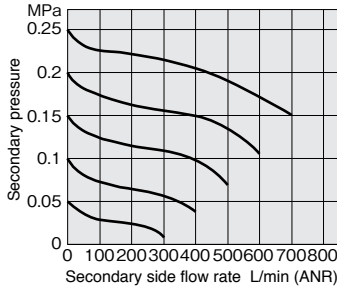
● RS111-01-TF



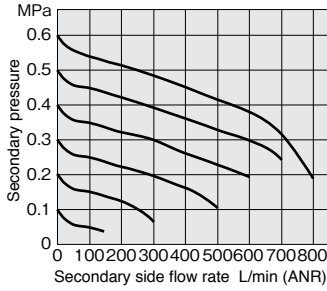
● RS100-02



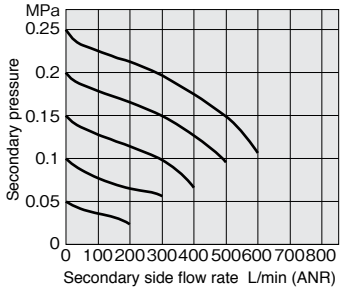
● RS101-02



● RS110-02-TF



● RS111-02-TF

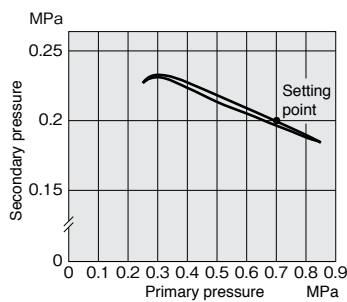


1MPa = 145psi., 1L/min = 0.0353ft.<sup>3</sup>/min.

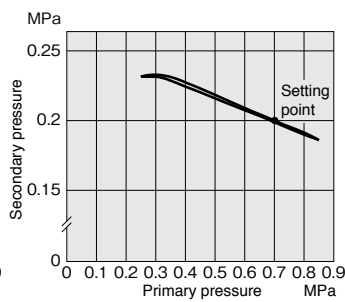
Remark: The graphs show flow rate characteristics when the primary pressure is fixed at 0.7MPa [102psi.].

## Pressure Characteristics

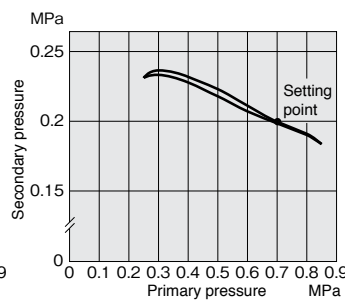
● RS100



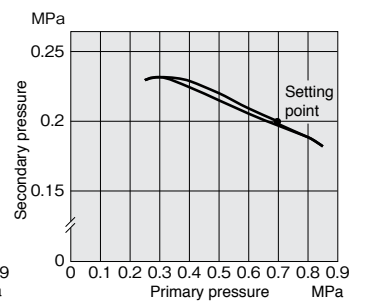
● RS101



● RS110-□-TF

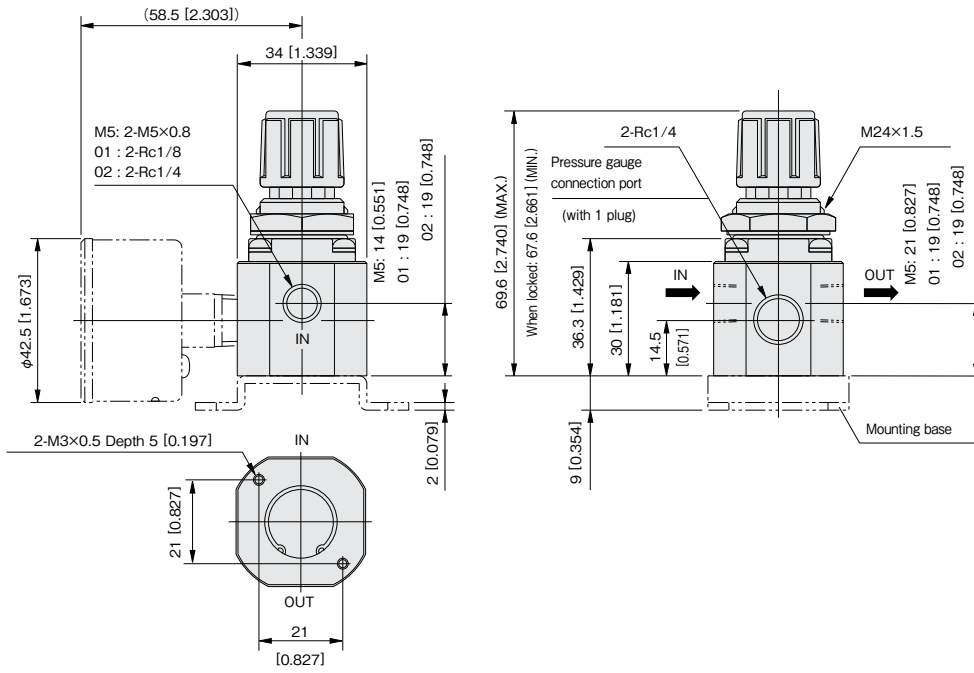
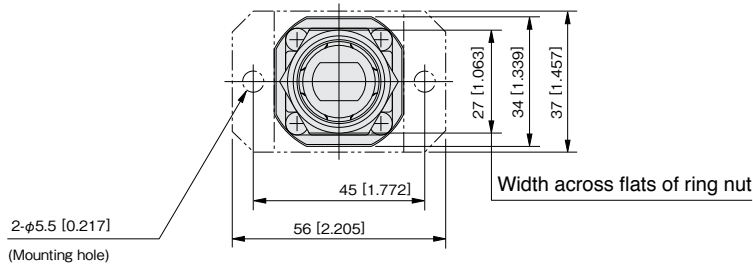


● RS111-□-TF



1MPa = 145psi.

**Dimensions mm [in.]**



Remark: The mounting hole diameter for mounting the stainless regulator on a panel, etc. should be φ 24.5 [0.965].